

T199

Conversion Kit® for Komatsu 930E-4 and 980E-4 Haul Trucks



KOMATSU

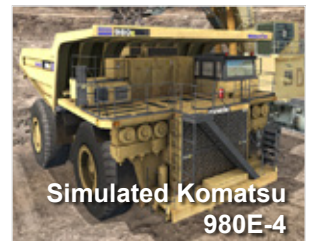
Komatsu exclusively recommend Immersive Technologies' Advanced Equipment Simulators to Komatsu dealers and mining customers worldwide. Komatsu exclusively allows Immersive Technologies to use its proprietary machine information to ensure its simulators are engineered to the highest fidelity and realism.

Immersive Technologies' T199 Conversion Kit includes a complete replica cab of the Komatsu 930E-4/980E-4 with fully functional controls and instrumentation sourced directly from Komatsu, including an operational Komatsu warning light module and status panel that provide operators information on a wide range of vital machine functions, as well as featuring genuine Komatsu dash panel, gear selector, hoist control levers and automatic speed controls.

With mining equipment becoming increasingly technically sophisticated, the level of information, experience and organizational competencies required to accurately simulate these machines also increases. Through Immersive Technologies' industry experience and exclusive alliance with Komatsu, you can be assured your training solution will be the only accurate and true representation of the real machine available.



Komatsu 980E-4



Simulated Komatsu 980E-4

Expect Results

T199 Conversion Kit® for Komatsu 930E-4 and 980E-4 Haul Trucks



Genuine Komatsu gauges



Gear selector, emergency shutdown and fault reset switch



Throttle and retarder/service brake pedals match real machine cab



Conversion Kit Features

CONVERSION KIT® COMPATIBLE WITH SIMULATORS

PRO4 IM360 LX6 LX3

Innovative Simulator Training Software

Immersive Technologies' SimControl software includes a range of specific Komatsu 930E-4/980E-4 operator errors for recording and measuring incorrect operator behaviors. In addition, SimControl allows a trainer to initiate machine faults or incidents in order to train and assess operators in responding appropriately.

Training opportunities include:

- Hazard Avoidance
- Operator Productivity
- Fuel Efficiency
- Tire Preservation
- Site Safety Procedures
- Minimizing Unscheduled Maintenance



Industry Leading Mining Simulators

As the world's largest supplier of mining equipment simulators, Immersive Technologies has deployed solutions in 44 countries and works closely with mining operations and equipment manufacturers to solve real industry problems in areas of safety, productivity, reactive maintenance and the availability of skilled personnel. Immersive Technologies is the only equipment simulator supplier with a consistent and proven track record of delivering significant and measurable in-field improvements.

This experience, together with ongoing feedback from our mining customer base and Original Equipment Manufacturer alliance partners, has provided Immersive Technologies with the knowledge necessary to develop the industry standard in Advanced Equipment Simulators. Our Solutions incorporate the industry's most advanced training functionality ensuring your operators are safer and your site is more profitable.

